



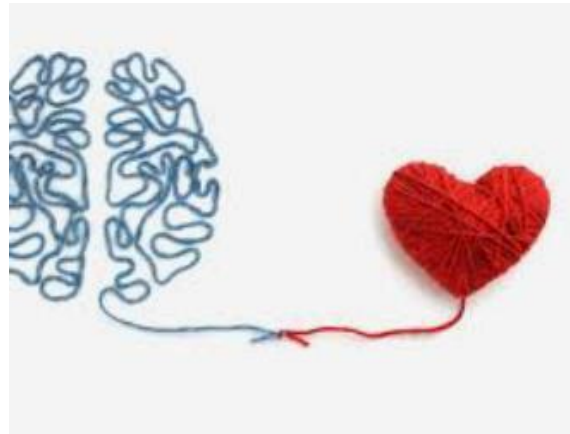
# Shaping What's Next The Future of Women in Health & Safety

Presented by Tanya Pelja, Executive Director,  
HSEQ & Transitions, BGIS

---

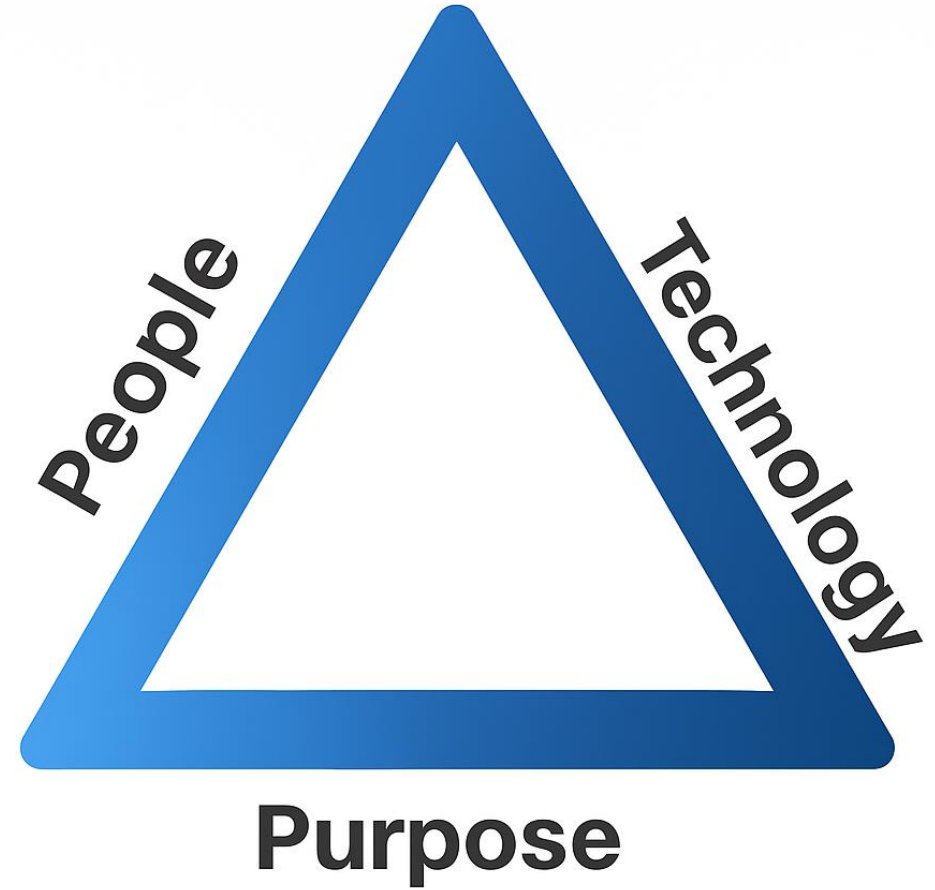
# The Changing Landscape

---



# Forces Shaping the Future

---





# Why women are central

---

- Empathy
- Collaboration
- Adaptability



# Stand Firm in your space

---

- What is felt post organisational failure in safety?
- What's the action?
- Form follows function

# Barriers & Realities

- Representation
- Bias
- Balance





# Solidifying Your Place

The background of the slide features a blurred image of a hand holding a pen and writing on an open book. Overlaid on this image are various digital circuit patterns in blue, green, and pink, including lines, dots, and rectangular shapes, creating a high-tech, digital aesthetic.

- Digital Fluency
- Influence & Visibility
- Mentorship & Sponsorship

# Skills for the Next Era

---





# Thriving, Not Just Surviving

---

“You can’t lead well if you’re running on empty.”

Rest • Support • Growth



# Call to Action



Lead Boldly • Invest in Yourself  
Shape the Culture

# Q & A

Your thoughts?  
How will you shape what's next?